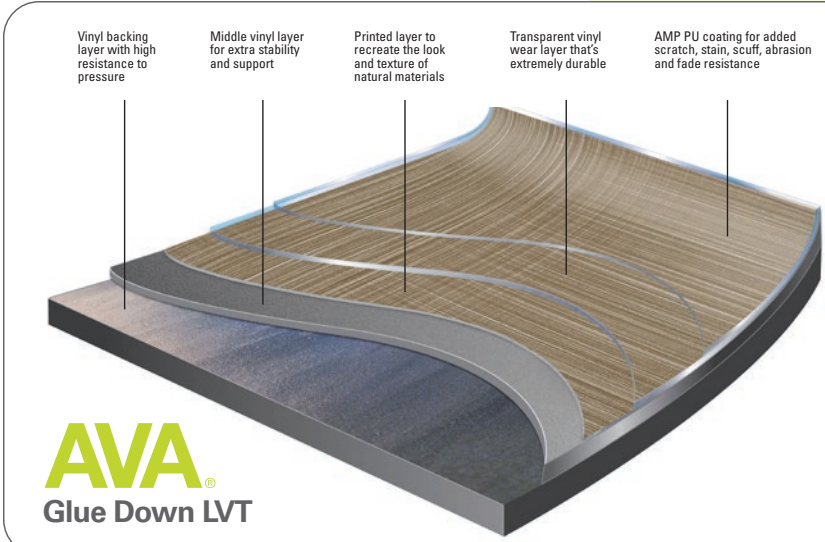


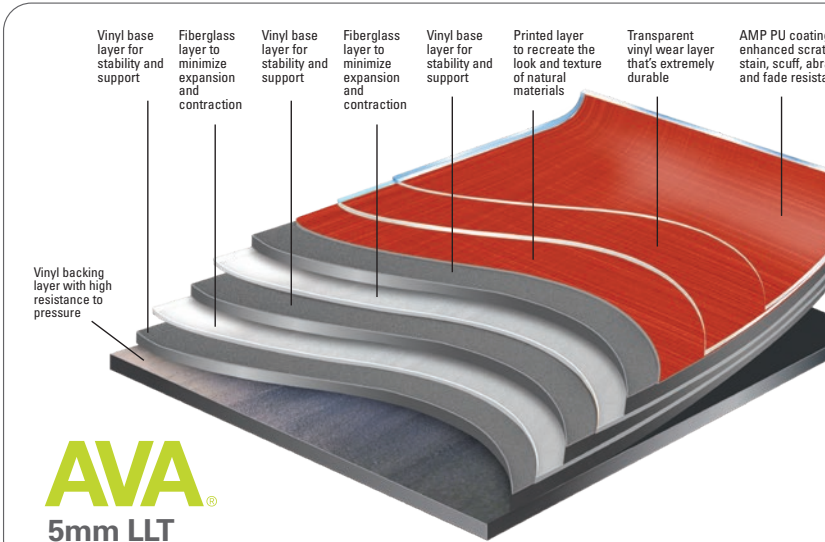
Glue Down Specifications

- Wear Layer: 22 mil (0.55 mm)
- Overall Thickness: 2.5 mm
- Size: 9.84" x 39.37" (250mm x 1000mm)
- 100% Phthalate Free
- Reach Compliant
- Warranty: 20-Year Commercial and Lifetime Residential



5mm LLT Specifications

- Wear Layer: 22 mil (0.55 mm)
- Overall Thickness: 5.0 mm
- Size: 9.84" x 39.37" (250mm x 1000mm)
- 100% Phthalate Free
- Reach Compliant
- Warranty: 20-Year Commercial and Lifetime Residential



- Patented Coating
- 30% More Scratch Resistance Over Typical Coatings
- Exceptional Wear Resistance and High Strength
- Low-gloss finish

ASTM F1700 SOLID VINYL TILE:	CLASS III, TYPE B
ASTM F2055 SIZE:	PASSES, ± 0.4 MM
ASTM F387 THICKNESS OF RESILIENT FLOORING:	PASSES, ± 0.13 MM
ASTM F410 WEAR LAYER THICKNESS:	PASSES, ≥ 0.5 MM
ASTM F2055 SQUARENESS:	PASSES, ± 0.25 MM
ASTM F1914 RESIDUAL INDENTATION:	PASSES, ≤ 0.2 MM
ASTM F137 FLEXIBILITY:	PASSES, 25.4MM MANDREL
ASTM F2199 DIMENSIONAL STABILITY:	PASSES, < 0.5 MM / LIN. FT.
ASTM F925 CHEMICAL RESISTANCE:	PASSES ASTM F1700 REQUIREMENTS
ASTM F1514 RESISTANCE TO HEAT:	PASSES, < ΔE 8
ASTM F1515 RESISTANCE TO LIGHT:	PASSES, < ΔE 8
ASTM F970 STATIC LOAD (MODIFIED):	≤ 0.4 MM INDENT, 1500 LBS.
ASTM E648 (NFPA 253) CRITICAL RADIANT FLUX:	CLASS I, >0.45 W/CM²
ASTM E662 (NFPA 258) SMOKE DENSITY:	PASSES, <450
ASTM D2047 / UL 410 SLIP RESISTANCE:	> 0.5 SCOF (NO RAMPS)
ASTM E492 / E989 IMPACT INSULATION CLASS:	2.5 MM: IIC 56* (W/ F-22-SCU) / 5 MM: IIC 56* (W/ 22-SCU), IIC 56 [§]
ASTM E90 / E413 SOUND TRANSMISSION CLASS:	2.5 MM: STC 50* (W/ F-22-SCU) / 5 MM: STC 51* (W/ 22-SCU), STC 62 [§]
ASTM E2179 DELTA IMPACT INSULATION CLASS:	2.5 MM: ΔIIC 25* (W/ F-22-SCU) / 5 MM: ΔIIC 24* (W/ 22-SCU), ΔIIC 16*

* 6" concrete | § 6" concrete, gypsum ceiling



With worldwide sales offices and distribution partners, AVA is a leader in the design and manufacturing of innovative and sustainable resilient flooring. Established in 1984, AVA has developed a diverse range of designs and products that have won numerous awards and are recognized by the industry as setting the benchmark in LVT.

AVA® and VRSE™ are trademarks of Novalis® Innovative Flooring.

© 2025 Novalis® Innovative Flooring



avaflor.com • 877.861.5292
sales@avaflor.com



Lyric, Harmony, Sonnet

AVA 2VRSE



NOVALIS
INNOVATIVE FLOORING

AVA 2VRSE

AVA 2VRSE



Featuring seven new bold colors, the multi-directional look of 2VRSE™ offers unique design and installation flexibility compared to your average linear patterns. The crosshatch design of the 2VRSE™ pattern provides tone-on-tone shading and dimensional impact that most linear patterns cannot achieve. Now with more impactful colors, 2VRSE™ creates striking designs that stand out and get noticed in Workplace/Corporate, Education, Hospitality and Retail environments.



Lyric, Dolce, Crescendo



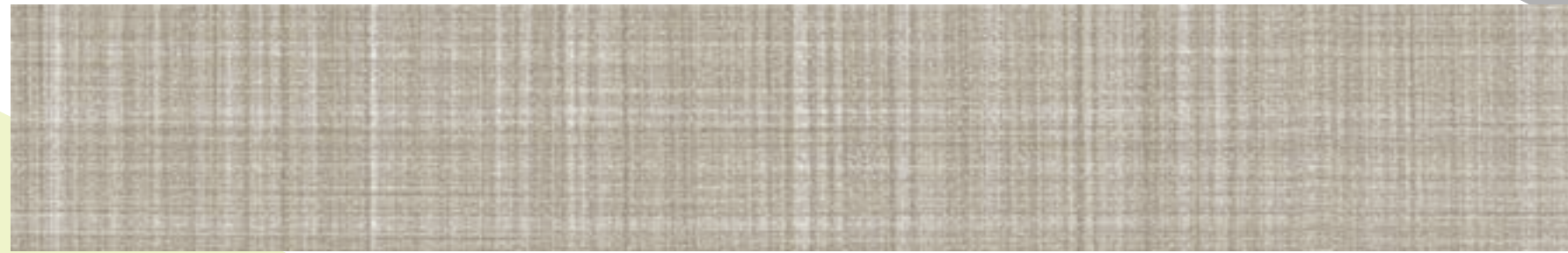
Chanson Glue Down: 2VRS004 / 5mm LLT: 2VRS004L



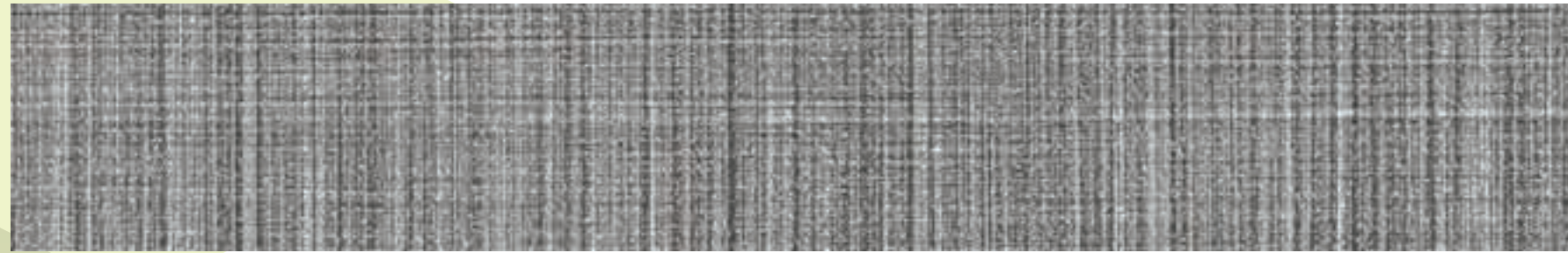
Lyric Glue Down: 2VRS012 / 5mm LLT: 2VRS012L



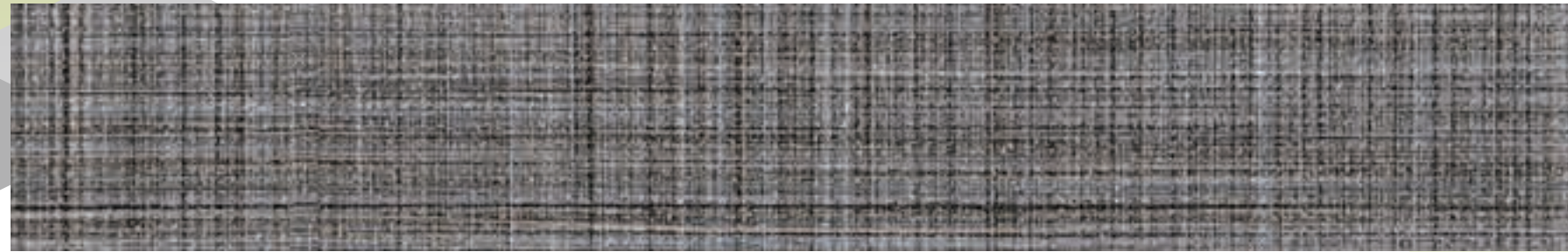
Minuet Glue Down: 2VRS003 / 5mm LLT: 2VRS003L



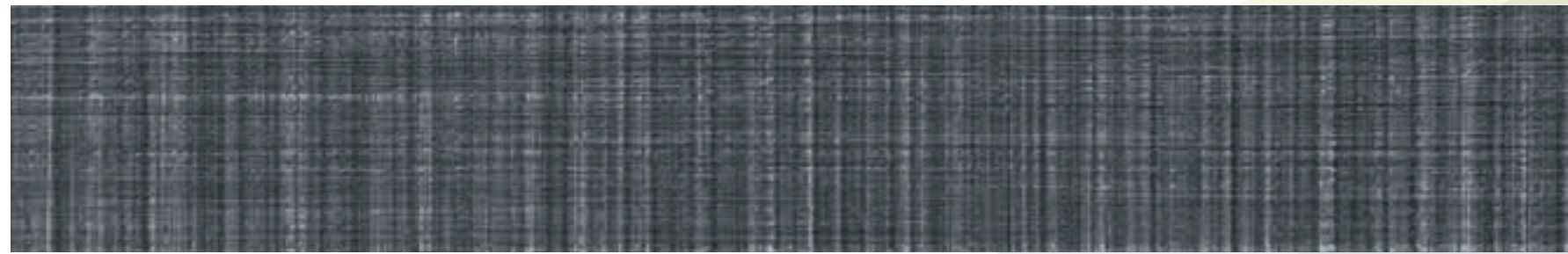
Serenade Glue Down: 2VRS002 / 5mm LLT: 2VRS002L



Treble Glue Down: 2VRS013 / 5mm LLT: 2VRS013L



Rubato Glue Down: 2VRS014 / 5mm LLT: 2VRS014L



Prelude Glue Down: 2VRS015 / 5mm LLT: 2VRS015L



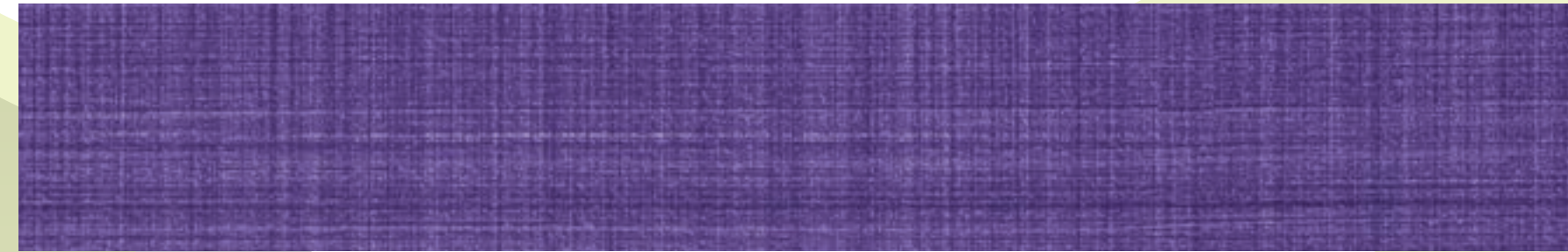
Dolce Glue Down: 2VRS019 / 5mm LLT: 2VRS019L



Crescendo Glue Down: 2VRS018 / 5mm LLT: 2VRS018L



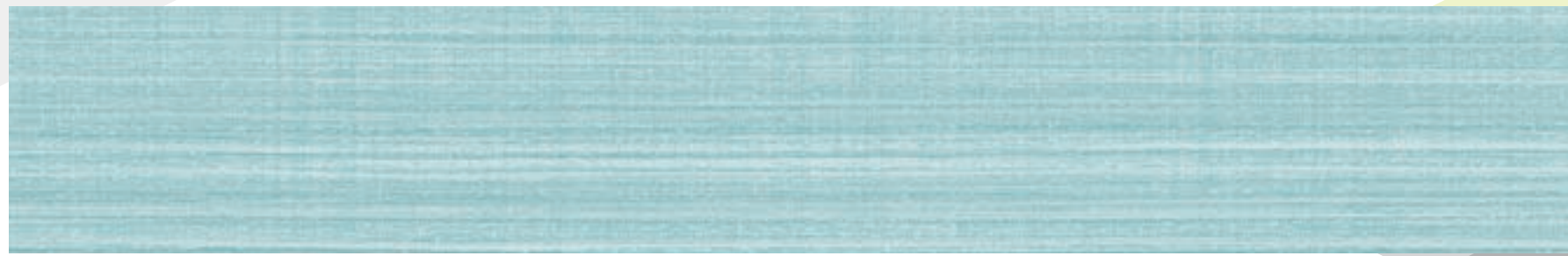
Soprano Glue Down: 2VRS022 / 5mm LLT: 2VRS022L



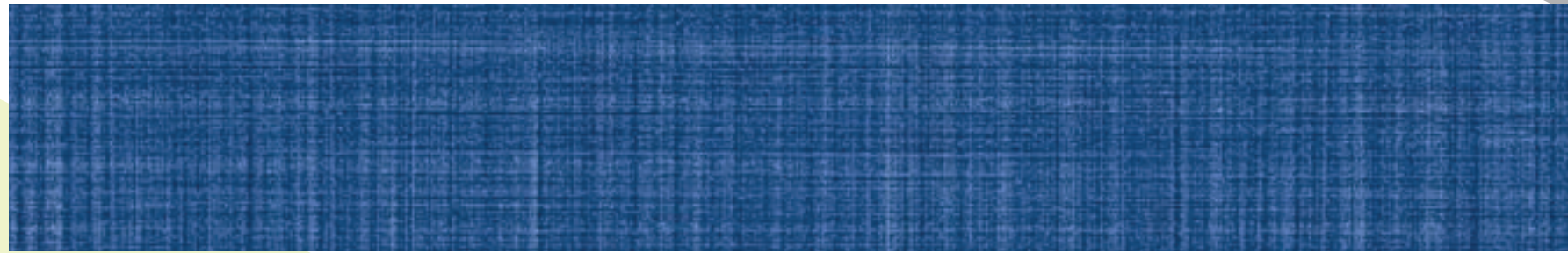
Interlude Glue Down: 2VRS017 / 5mm LLT: 2VRS017L



Aria Glue Down: 2VRS023 / 5mm LLT: 2VRS023L



Harmony Glue Down: 2VRS021 / 5mm LLT: 2VRS021L



Sonnet Glue Down: 2VRS020 / 5mm LLT: 2VRS020L



Harmony, Treble



Aria, Minuet