

Glue Down Specifications

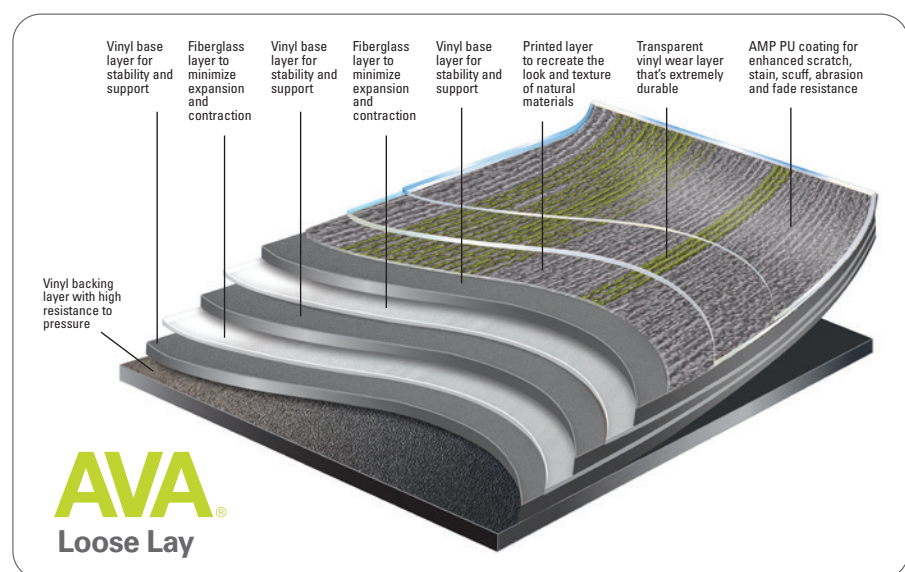
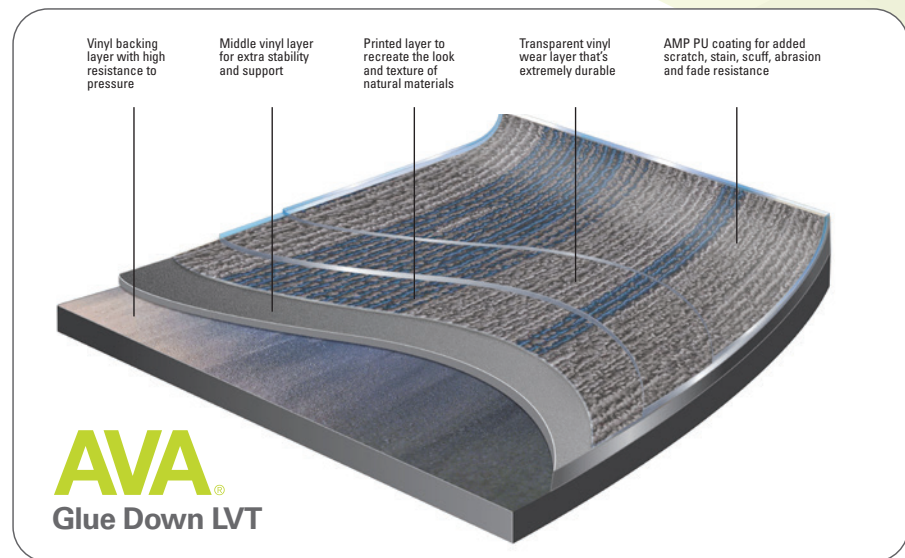
- Wear Layer: 22 mil (0.55mm)
- Overall Thickness: 2.5 mm
- Size: 9.84" x 39.37" (250mm x 1000mm)
- 100% Phthalate Free
- Reach Compliant
- Warranty: 20-Year Commercial and Lifetime Residential

Loose Lay Specifications

- Wear Layer: 22 mil (0.55mm)
- Overall Thickness: 5.0 mm
- Size: 9.84" x 39.37" (250mm x 1000mm)
- 100% Phthalate Free
- Reach Compliant
- Warranty: 20-Year Commercial and Lifetime Residential



- Patented Coating
- 30% More Scratch Resistance Over Typical Coatings
- Exceptional Wear Resistance and High Strength
- Low-gloss finish



ASTM F1700 SOLID VINYL TILE:	CLASS III, TYPE B
ASTM F1914 RESIDUAL INDENTATION:	PASSES, <10%
ASTM F137 FLEXIBILITY:	PASSES, 25.4MM MANDREL
ASTM F2199 DIMENSIONAL STABILITY:	PASSES, <0.020 IN. PER LIN. FT.
ASTM F925 CHEMICAL RESISTANCE:	PASSES (ASK FOR CHART)
ASTM F1514 HEAT COLOR STABILITY:	PASSES, < Δ8E
ASTM F1515 LIGHT COLOR STABILITY:	PASSES, < Δ8E
ASTM F970 STATIC LOAD LIMIT:	PASSES, 250 LBS.
ASTM F970 MODIFIED FOR MAX WEIGHT:	1,450 LBS. (GLUE DOWN); 1,200 LBS. (LL)
ASTM E648 (NFPA 253) CRITICAL RADIANT FLUX:	CLASS I, >0.45 W/CM²
ASTM E662 (NFPA 258) SMOKE DENSITY:	PASSES, <450
ASTM D2047 SLIP RESISTANCE:	>0.6 (DRY)



With worldwide sales offices and distribution partners, AVA is a leader in the design and manufacturing of innovative and sustainable resilient flooring. Established in 1984, AVA has developed a diverse range of designs and products that have won numerous awards and are recognized by the industry as setting the benchmark in LVT.

AVA® and STRM™ are trademarks of Novalis® Innovative Flooring.

© 2024 Novalis® Innovative Flooring



avaflor.com • 877.861.5292
sales@avaflor.com



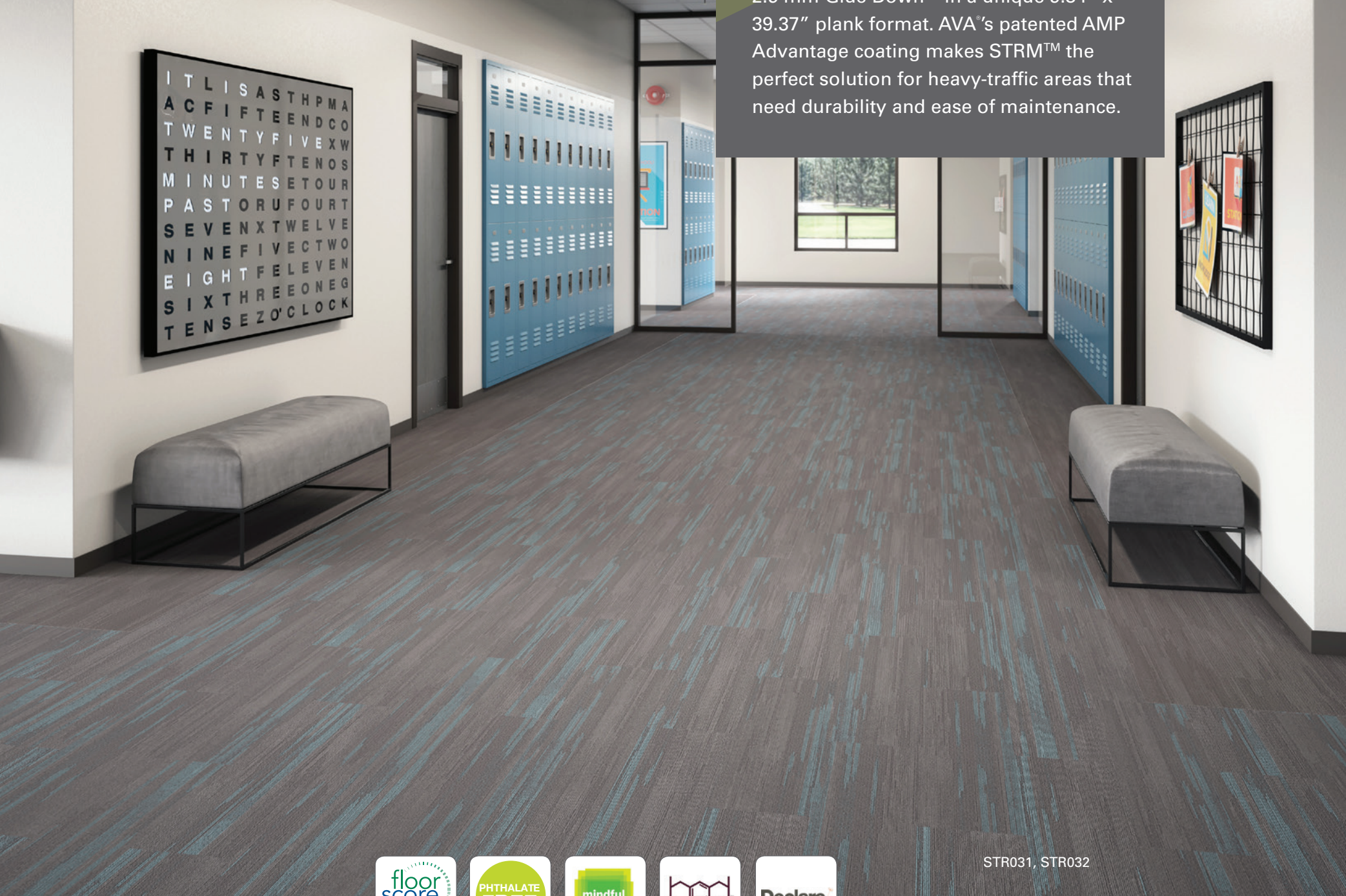
AVA® STRM™



NOVALIS®
INNOVATIVE FLOORING

AVA® STRM™

AVA® STRM™



Blending the performance and durability of hard surface with the soft and warm visuals of carpet tile, AVA® STRM™ brings unique design options for any commercial setting, including Hospitality, Retail and Public Spaces.

STRM™ is offered in two different constructions – 5 mm Loose Lay and 2.5 mm Glue Down – in a unique 9.84" x 39.37" plank format. AVA's patented AMP Advantage coating makes STRM™ the perfect solution for heavy-traffic areas that need durability and ease of maintenance.





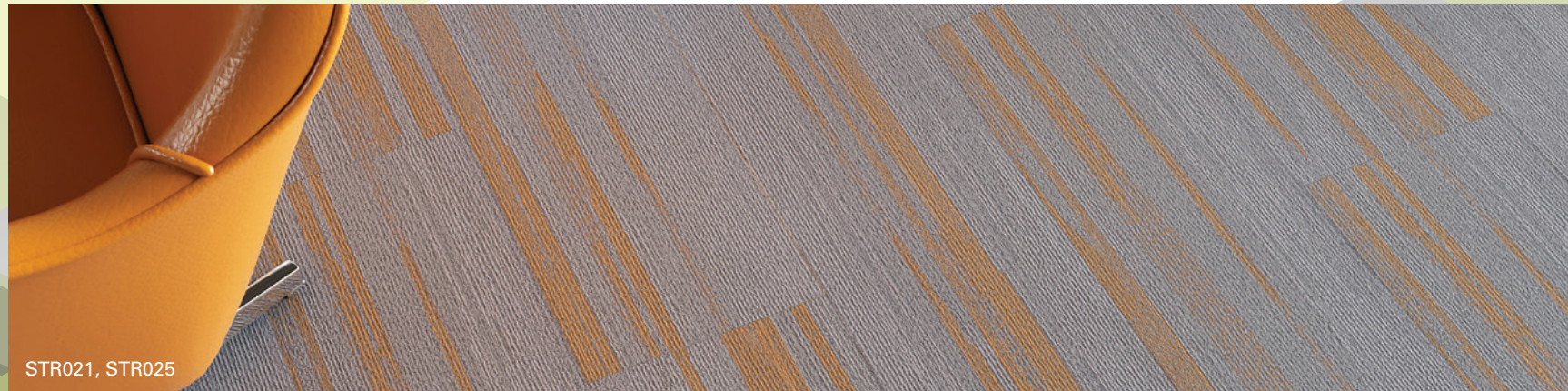
Glue Down: STR011 / Loose Lay: STR011L



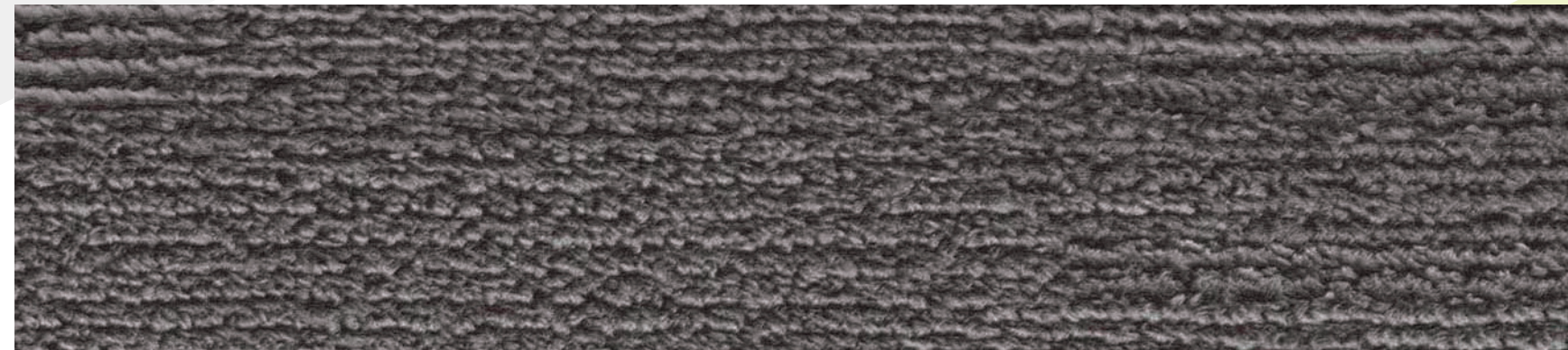
Glue Down: STR012 / Loose Lay: STR012L



Glue Down: STR013 / Loose Lay: STR013L



STR021, STR025



Glue Down: STR031 / Loose Lay: STR031L



Glue Down: STR032 / Loose Lay: STR032L



Glue Down: STR033 / Loose Lay: STR033L



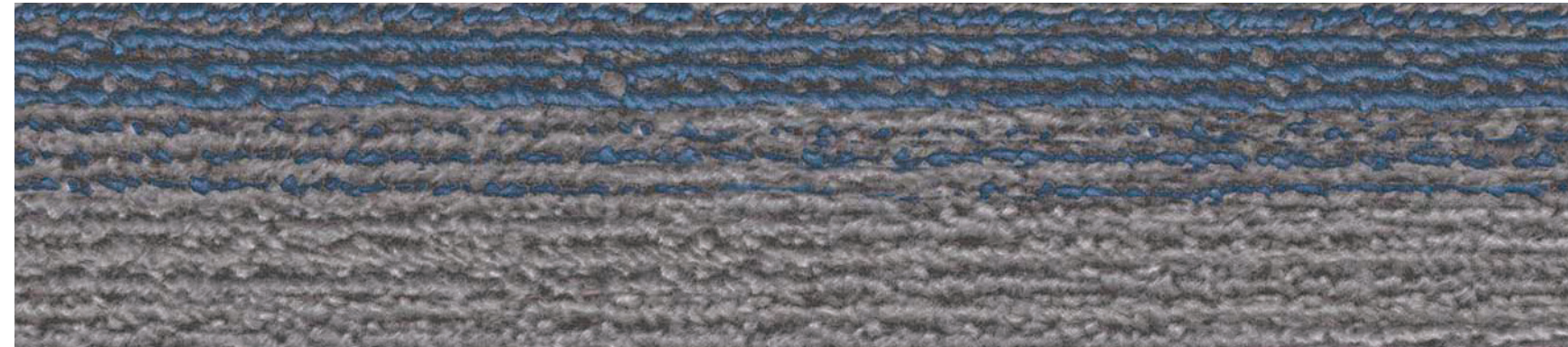
STR022, STR021



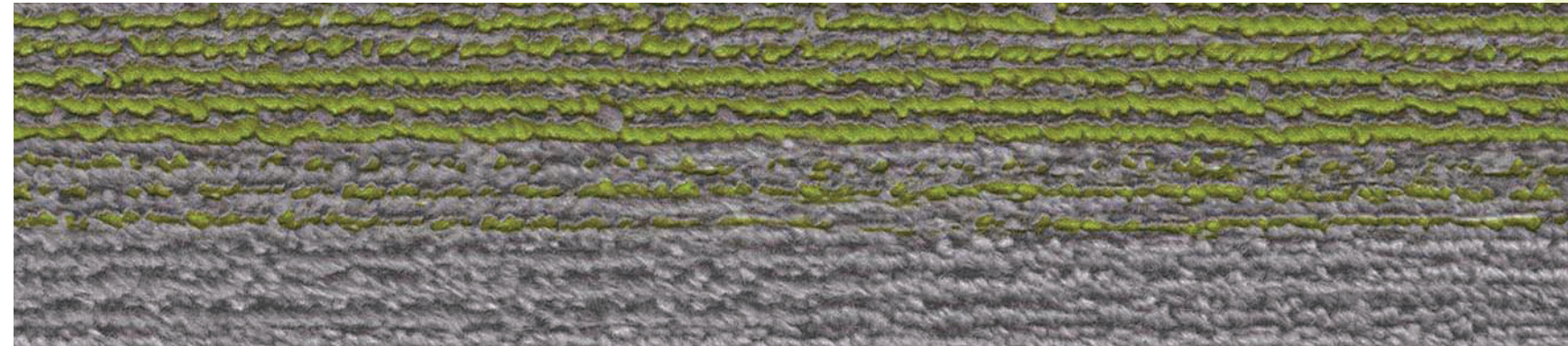
STR031, STR033



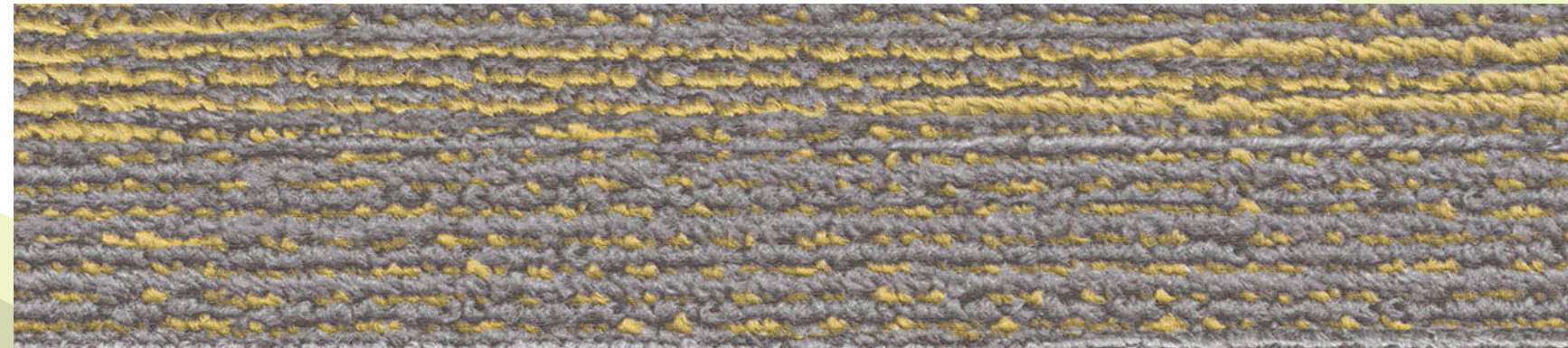
Glue Down: STR021 / Loose Lay: STR021L



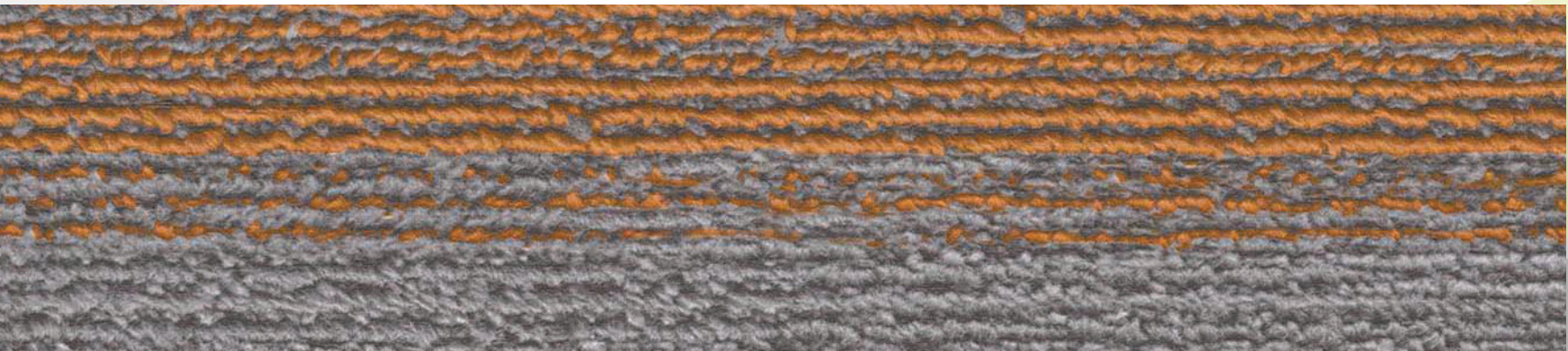
Glue Down: STR022 / Loose Lay: STR022L



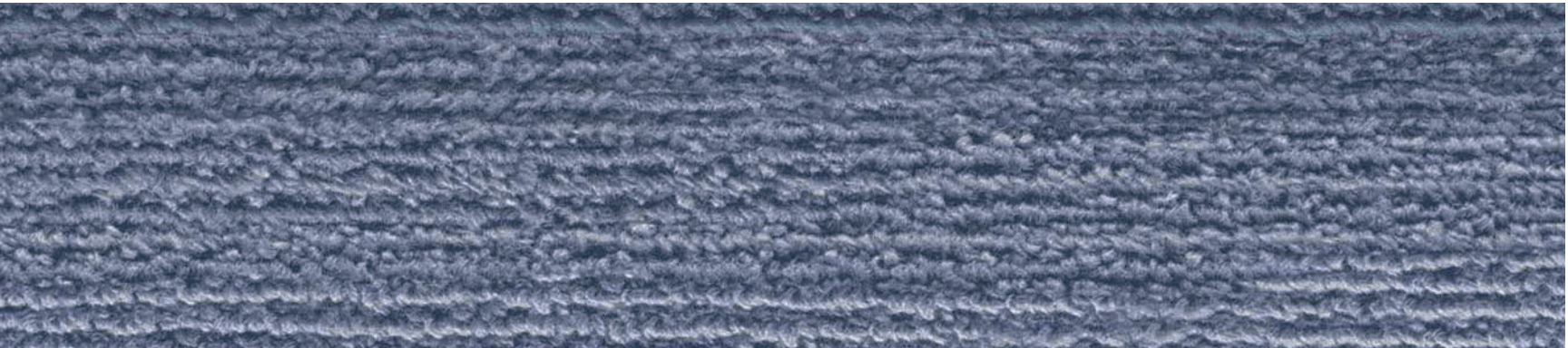
Glue Down: STR023 / Loose Lay: STR023L



Glue Down: STR024 / Loose Lay: STR024L



Glue Down: STR025 / Loose Lay: STR025L



Glue Down: STR041 / Loose Lay: STR041L



Glue Down: STR051 / Loose Lay: STR051L



STR013, STR051