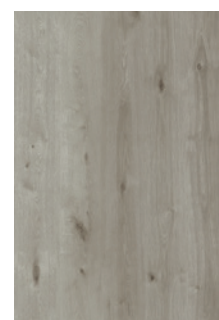


## Specifications

- Wear Layer: 22 mil (0.55 mm)
- Overall Thickness: 6.0 mm
- 100% Phthalate Free
- IXPE Acoustical Backing
- Reach Compliant
- Warranty: 10-Year Heavy Commercial & Lifetime Residential



- All RSRV planks and tiles have the AMP Coating
- Patented Coating
  - 30% More Scratch Resistance Over Typical Coatings
  - Exceptional Wear Resistance and High Strength



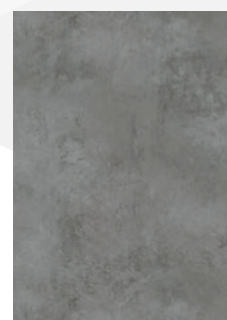
**Kyoto**  
9.25" x 71.45"



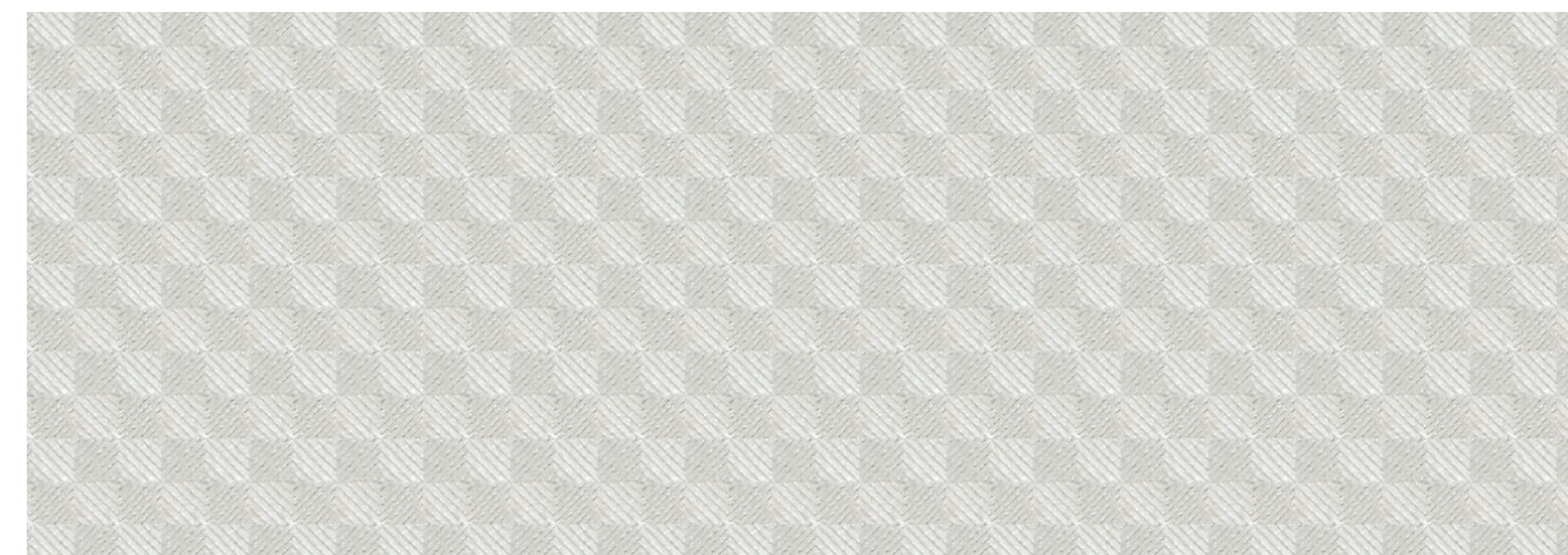
**Washed**  
6.6" x 59.75"



**Komma**  
6.6" x 59.75"

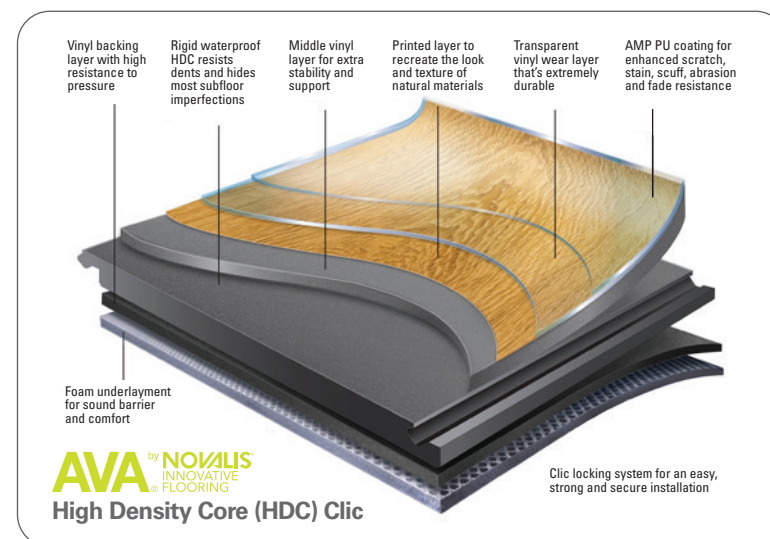


**Béton**  
18" x 36" (nominal)



IXPE Acoustical Backing

ASTM F1700-13 SOLID VINYL FLOOR TILE:	CLASS 1, TYPE B
ASTM D2047 STATIC COF FOR POLISHED SURFACES:	EXCEEDS INDUSTRY STANDARDS
ASTM F970-07 STATIC LOAD LIMIT: PASSES	PASSES
ASTM E648 CRITICAL RADIANT FLUX:	CLASS 1
ASTM E662 SMOKE DENSITY:	PASSES
ASTM F925 STAIN & CHEMICAL RESISTANCE:	EXCELLENT



With worldwide sales offices and distribution partners, AVA is a leader in the design and manufacturing of innovative and sustainable resilient flooring. Established in 1984, AVA has developed a diverse range of designs and products that have won numerous awards and are recognized by the industry as setting the benchmark in LVT.

AVA® and RSRV™ are trademarks of Novalis® Innovative Flooring.

© 2024 Novalis® Innovative Flooring



avaflor.com • 877.861.5292  
sales@avaflor.com



AVA® RSRV



NOVALIS®  
INNOVATIVE FLOORING

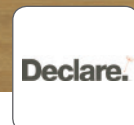
AVA® RSRV™

AVA® RSRV™



With three unique wood patterns sharing six common base colors, RSRV provides a variety of registered embossed plank styles to mix and match, along with four concrete patterned tiles. Choose from wood grain collections that include the fine lines and bold size of Kyoto, the rugged aged look of Komma and the pure grains of Washed.

The robust style, high density core (HDC) clic construction and IXPE acoustical backing makes RSRV a perfect selection for busy Hospitality and Retail locations where style and consumer comfort are key.





Kyoto (9.25" x 71.45")



Kyoto Loft

RKY001S-605



Kyoto Honey

RKY002S-605



Kyoto Cellar

RKY003S-605



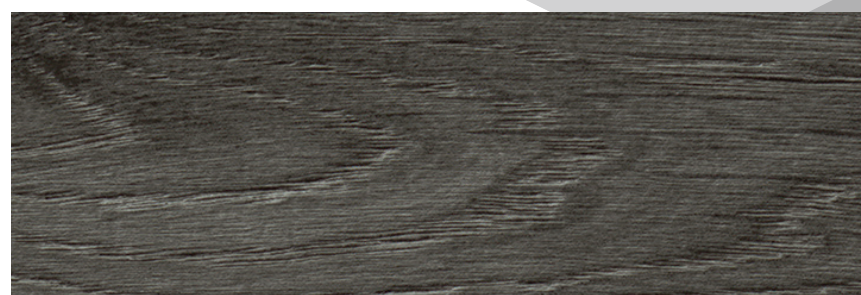
Kyoto Edgewater

RKY004S-605



Kyoto Legacy

RKY005S-605



Kyoto Wharf

RKY006S-605

Washed (6.6" x 59.75")



Washed Loft

RWA001S-605



Washed Honey

RWA002S-605



Washed Cellar

RWA003S-605



Washed Edgewater

RWA004S-605



Washed Legacy

RWA005S-605



Washed Wharf

RWA006S-605

Komma (6.6" x 59.75")



Komma Loft

RKO001S-605



Komma Honey

RKO002S-605



Komma Cellar

RKO003S-605



Komma Edgewater

RKO004S-605



Komma Legacy

RKO005S-605



Komma Wharf

RKO006S-605

Béton (18" x 36" nominal)



Béton Pearl

RBE001S-605



Béton Iron

RBE002S-605



Béton Steel

RBE003S-605



Béton Harbor

RBE004S-605