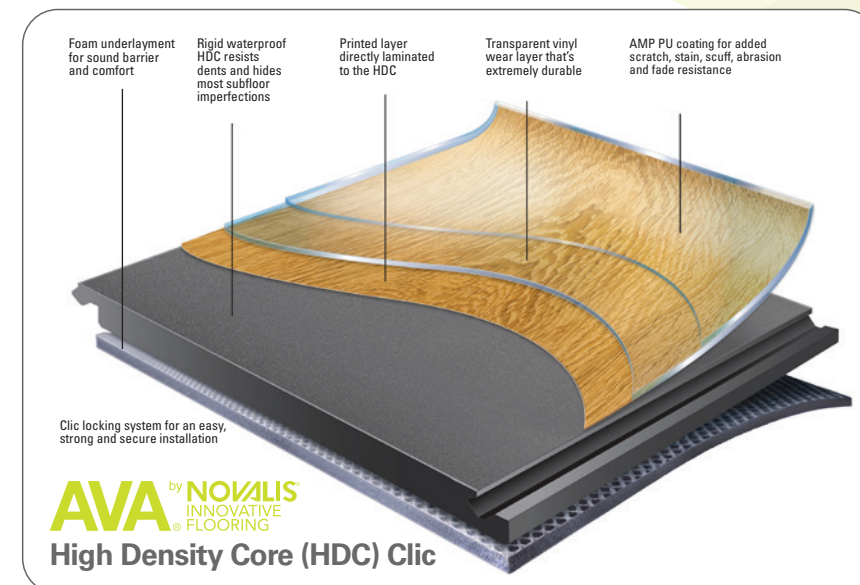


HDC Specifications

- Wear Layer: 8 mil (0.2 mm)
- Overall Thickness: 4.2 mm
- Size: 5.75" x 47.75"
- 100% Phthalate Free
- IXPE Acoustical Backing
- Reach Compliant
- Warranty: 12-Year Residential

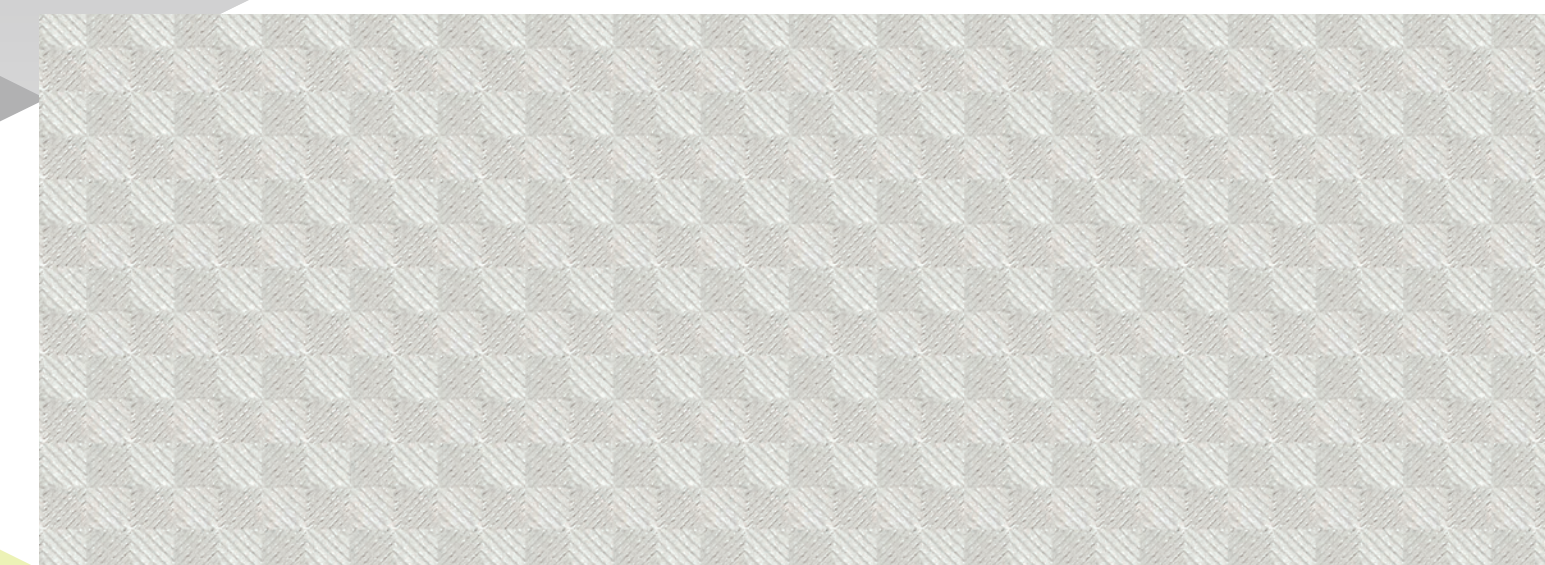


HDC 4.2 mm



Baltic Oak Suede

BO2003D



IXPE Acoustical Backing

AVA[®]

With worldwide sales offices and distribution partners, AVA is a leader in the design and manufacturing of innovative and sustainable resilient flooring. Established in 1984, AVA has developed a diverse range of designs and products that have won numerous awards and are recognized by the industry as setting the benchmark in LVT.

AVA[®] and 2STYL[™] are trademarks of Novalis[®] Innovative Flooring.

© 2024 Novalis[®] Innovative Flooring



avaflor.com • 877.861.5292
sales@avaflor.com



AVA[®] 2STYL



NOVALIS[®]

INNOVATIVE FLOORING

AVA[®] 2STYL[™]

AVA[®] 2STYL[™]

2STYL brings the popular 6" x 48" plank size to complement the original 6" x 36" 2.0mm/8 mil STYL lineup, along with new patterns and colors in two different constructions for standard glue down and high density core (HDC, 4.2mm/8 mil) clic.

Strong, secure HDC clic planks feature IXPE acoustical backing for sound reduction, shock absorption and comfort underfoot.

Glue Down 2.0 mm

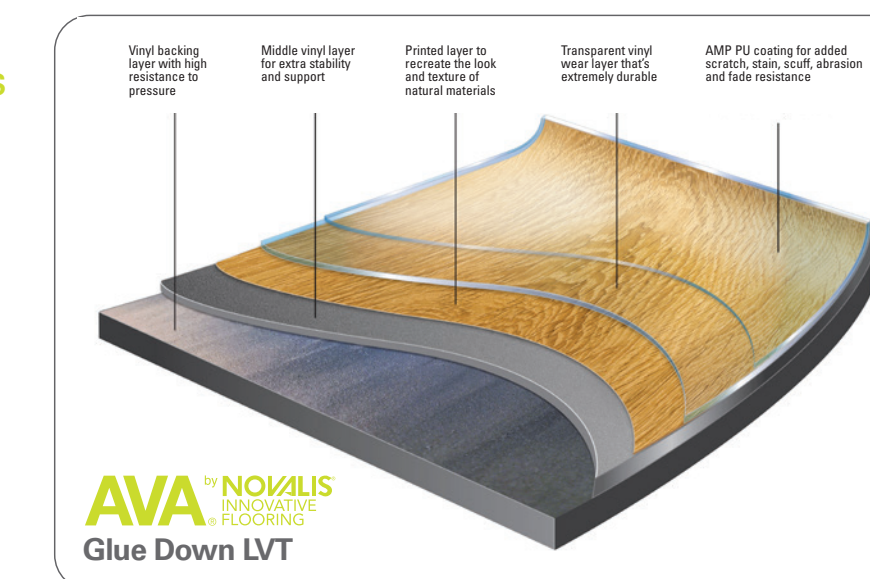


Baltic Oak Suede

BO2003

Glue Down Specifications

- Wear Layer: 8 mil (0.2 mm)
- Overall Thickness: 2.0 mm
- Size: 6" x 48"
- 100% Phthalate Free
- Reach Compliant
- Warranty: 10-Year Residential and 3-Year Light Commercial



AVA[®]2STYL[™]

The patented AMP Coating features 30% more scratch resistance over typical coatings, making 2STYL an ideal 8-mil solution for multi-family dwellings looking for budget-friendly high-performance.



- Exceptional Wear Resistance and High Strength



ASTM F1700-13 SOLID VINYL FLOOR TILE:	CLASS III, TYPE B (GLUE DOWN); CLASS 1, TYPE B (HDC)
ASTM D2047 STATIC COF FOR POLISHED SURFACES:	EXCEEDS INDUSTRY STANDARDS
ASTM F970-07 STATIC LOAD LIMIT:	PASSES
ASTM E648 CRITICAL RADIANT FLUX:	CLASS 1
ASTM E662 SMOKE DENSITY:	PASSES
ASTM F925 STAIN & CHEMICAL RESISTANCE:	EXCELLENT



AVA[®]2STYL[™]



Baltic Oak Taupe

Glue Down: BO2002 / HDC: BO2002D



Baltic Oak Hazel

Glue Down: BO2006 / HDC: BO2006D



Baltic Oak Corduroy

Glue Down: BO2005 / HDC: BO2005D



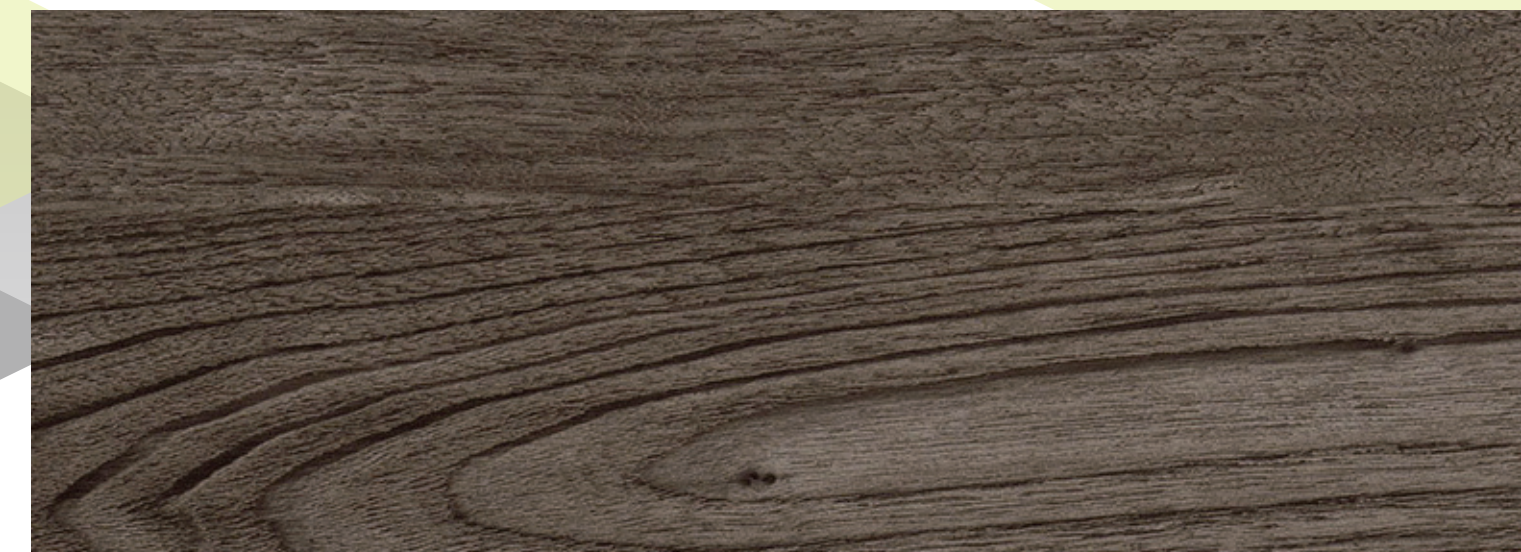
Baltic Oak Tin

Glue Down: BO2004 / HDC: BO2004D



Claro Walnut Thunder

Glue Down: CW2002 / HDC: CW2002D



Claro Walnut Shadow

Glue Down: CW2001 / HDC: CW2001D



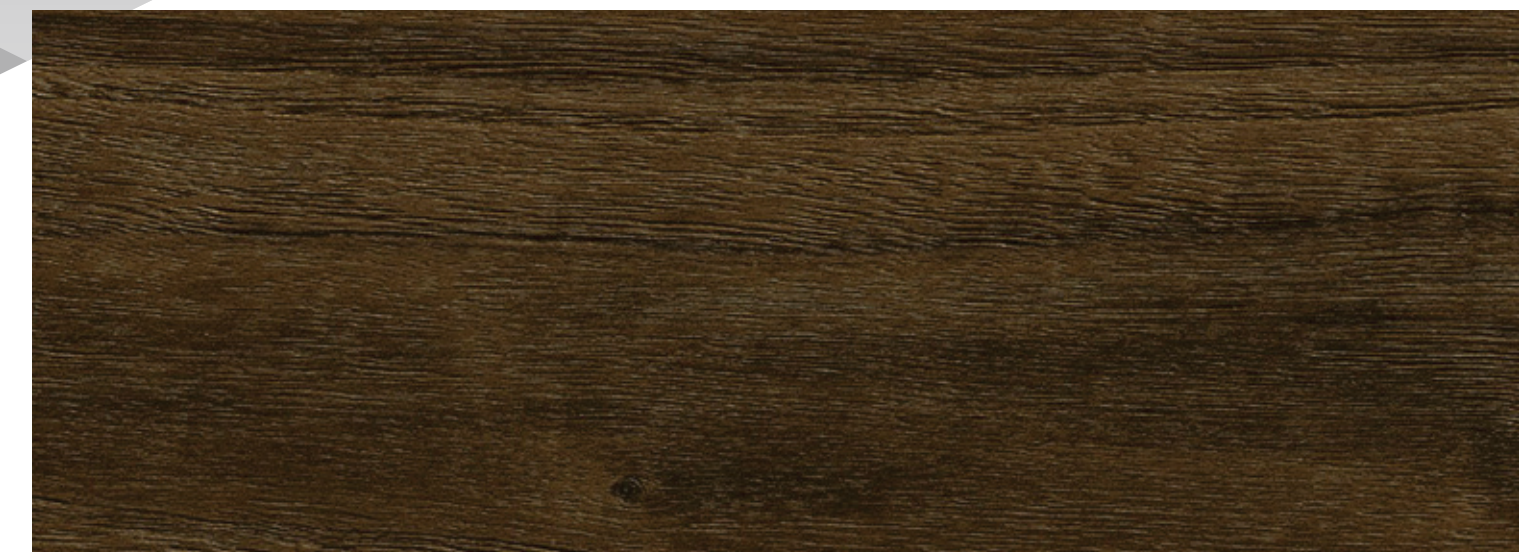
Sawn Oak Smoke

Glue Down: SA2003 / HDC: SA2003D



Sawn Oak Grey

Glue Down: SA2002 / HDC: SA2002D



European Walnut Chocolate

Glue Down: EW2001 / HDC: EW2001D